

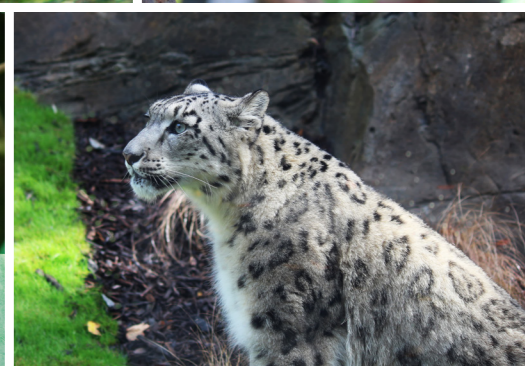
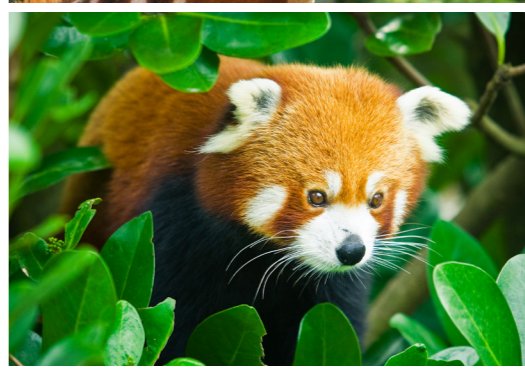


Me Tiaki, Kia Ora!
Te Nukua Wellington Zoo
Saving Wildlife and Wild Places

CONSERVATION STRATEGY 2024-27

WELLINGTON

ZOO



Ehara taku toa i te toa takitahi, engari he toa takitini

My warrior will never stand alone, my warrior will always stand as one of many

Inspired by Tūmatauenga (Tū) we will save wildlife and wild places. Tū is the primary guardian of people and encourages us to be strong and brave in facing challenges. In times of need Tū can be called on for strength and resolve. Tū knows that in order to protect and care for people we must protect and care for the environment. Our futures are inherently bonded.

Our goal for Te Nukuao Wellington Zoo's conservation work is to make a genuine and ongoing contribution to saving wildlife and wild places in Wellington, in New Zealand, and around the world. We will achieve this by working with our community, supporting our partners, developing our people, and leading projects for impact on the ground. Millions of people and their livelihoods, animals and their habitats are suffering from the impacts of climate change. Recognising the urgency of this crisis for wildlife and humanity, our conservation work will aim to improve resilience to climate change impacts. Me tiaki, kia ora! We must protect the environment so all things will thrive.

Recognition and involvement of the Zoo's conservation expertise

Te Nukua Wellington Zoo will be recognised as a conservation leader by stakeholders and our community. Our expertise in ex-situ and in-situ conservation, wildlife health, partnerships, and advocacy will be nationally and internationally respected. Our skills and knowledge will be in demand, and other organisations will recognise and seek out our people as experts.



2024-2027

- We will lead at least two programmes for small population management of native animals to restore wild populations.
- We will co-lead one conservation research project in partnership with a university.
- Wellington Zoo people will be invited to present our conservation work at conferences or external meetings at least annually.
- We will build capability of conservation skills among our staff based on gap analyses for those skills needed by us, our partners and DOC.
- All staff will participate in conservation activities, eg, volunteering, working on Zoo conservation projects, joining Zoo conservation and sustainability groups.
- Te Nukua Wellington Zoo people will be sought after for conservation work and our involvement will be regularly requested and provided.
- We will be recognised locally and globally as an exemplary conservation organisation punching above our weight, aligning with global frameworks and commitments.
- We will be recognised for our strength in advocating for the conservation work of Zoos to our communities, stakeholders, regulatory and legislative bodies.

Effective field partnerships for long term conservation success

To ensure positive impacts we will work with conservation partners who share our values, who are working to support the wild populations of animals we care for at the Zoo and the places they come from, and who value the Zoo as a partner. We will be recognised as an outstanding and supportive partner who is contributing to positive conservation impact.



2024-2027

- We will review current conservation partnerships and establish criteria for the selection of future partners and projects.
- Te Nukua Wellington Zoo people will use their Conservation Volunteering Leave to support a diverse range of organisations; we will receive positive feedback from the organisations supported and bring valuable conservation skills back to the Zoo.
- Te Nukua Wellington Zoo Partners in Conservation Fund will be used to support the conservation of wildlife and wild places.
- >5% of OPEX will contribute to conservation projects.
- Staff grants will be approved annually for mutually beneficial work with our conservation partners, in line with Te Nukua Wellington Zoo priorities.
- We will partner with mana whenua for the conservation of Aotearoa New Zealand native species; we will be seen as reliable and respectful partners.
- We will collaborate with local and global conservation organisations on mutually beneficial projects.

Supporting communities to take action for conservation

We will support communities to take action to protect wildlife and wild places, expanding our impact beyond our own work. We will inspire, inform, materially support, and celebrate conservation action among our visitors and wider community in line with the Conservation Learning Strategy.

2024-2027

- We will use our advocacy strength to inspire collective and civic action and influence change for climate action.
- We will foster connections between our Local Grants Programme recipients, our community, and our people, including an annual celebration event.
- We will build the next generation of conservation champions with programmes focused on empowering tamariki and rangatahi to take action for conservation as per the Conservation Learning Strategy.
- We will support local projects for conservation in the Te Whanganui-a-Tara Wellington region and the Chatham Islands via the provision of local conservation grants.
- We will monitor the impact of our community conservation work according to the Conservation Learning Strategy.
- We will mobilise Te Nukuao Wellington Zoo's community and stakeholders to advocate for conservation and climate action change at a systems level.



Integrating the UN Sustainable Development Goals

Quality Education (4), Sustainable Cities and Communities (11), Responsible Consumption and Production (12), Climate Action (13), Life Below Water (14), Life on Land (15)



The United Nations Sustainable Development Goals (SDGs) are the blueprint to achieve a better and more sustainable future for all. Te Nukuao Wellington Zoo has identified the SDGs that are most important to us and to our community and we will integrate consideration of these SDGs into all of our strategic decision-making. We will carry out our work with appreciation of the interrelationships between te hauora o te koiora (the health of indigenous biodiversity), te hauora o te taiao (the health of the wider environment), and te hauora o te tangata (the health of the people).

2024-2027

- Our commitment to sustainability and climate action will continue to underpin the work of everything we do at Te Nukuao Wellington Zoo, inspiring our community and our Zoo teams to make positive changes for the environment.
- We will include reporting on our contribution to the SDGs annually.
- We will review and refresh our SDG targets each year ensuring they stay strategically integral to different teams and across all levels at Te Nukuao Wellington Zoo.
- We will work across the Zoo to implement our SDG targets annually.



Me Tiaki, Kia Ora!
Te Nukua Wellington Zoo
Saving Wildlife and Wild Places

CONSERVATION STRATEGY 2024-27

WELLINGTON

Zoo

